



## Sink Specifications

Colour	SKU
brushed finish	401802

## QUATRUS R15 LAUNDRY

Stainless steel brushed finish

### Design and planning tips

- Min cabinet size: 27 in ( 685 mm )
- Sink Bowl 1 Length (left-to-right): 23 in ( 584.0 mm )
- Sink Bowl 1 Width (front-to-back): 17 in ( 432.0 mm )
- Bowl Depth: 12 in ( 305.0 mm )

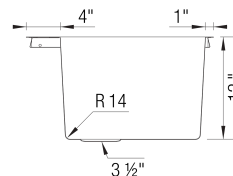
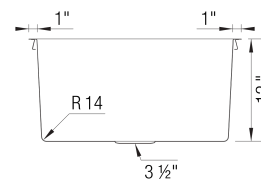
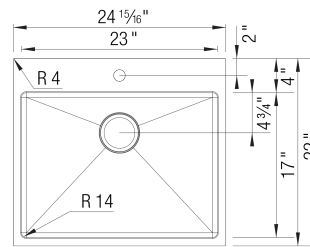
### Specifications:

Sink template, Mounting clips, Installation instructions, 3 ½" (90 mm) stainless steel strainers

Codes/Compliance: ASME A112.19.3-2017/CSA B45.4-17

Sink can be installed as a topmount or undermount.

Depending on cabinet construction, a different cabinet size may be required.



### Optional Accessories

Laundry Rack	401952
CapFlow Strainer Cover	517666

### Warranty

Limited lifetime warranty on all sinks and faucets. One-year warranty on all accessories and soap dispensers.

### Code/Standards Compliance

BLANCO sinks and faucets are third-party tested and certified to CSA, cUPC, ANSI/ASME, IAPMO and NSF standards and listed by applicable certification bodies. For more information on individual product listings, contact our office or listing organization.



Need support? Learn more by watching our sink & faucet How-to videos:

<https://www.blanco.com/ca-en/support/how-to-videos/how-to-videos-for-sinks/>



BLANCO Canada Inc  
100 Corporation Drive  
Brampton ON L6S 6B5

### Tel & Fax

Tel: 905-494-2400 Toll free: 1-877-425-2626

Fax: 905-494-2425 Toll free: 1-877-825-2626

While BLANCO strives to provide accurate information, all images and dimensions in this document are intended for reference only and are subject to change at any time without notice. This document is not intended for use as an installation guide. For technical installation details, refer to installation instructions provided with the product. BLANCO assumes no responsibility for the use of superseded or voided specifications.